

From: Wietgreffe, Wade (CPC) <wade.wietgreffe@sfgov.org>
Sent: Monday, August 10, 2020 2:02 PM
To: White, Elizabeth (CPC) <elizabeth.white@sfgov.org>; Poling, Jeanie (CPC) <jeanie.poling@sfgov.org>
Cc: Hong, Seung Yen (CPC) <seungyen.hong@sfgov.org>; ECN, BalboaReservoirCompliance (ECN) <balboareservoircompliance.ecn@sfgov.org>
Subject: RE: *urgent* A quick question related to fire access to Balboa Reservoir project

Thank you again, Liz. I'm adding this email to the administrative record.

Wade Wietgreffe, AICP, Principal Planner

From: White, Elizabeth (CPC) <elizabeth.white@sfgov.org>
Sent: Monday, August 10, 2020 1:56 PM
To: Wietgreffe, Wade (CPC) <wade.wietgreffe@sfgov.org>; Poling, Jeanie (CPC) <jeanie.poling@sfgov.org>
Cc: Hong, Seung Yen (CPC) <seungyen.hong@sfgov.org>
Subject: Fw: *urgent* A quick question related to fire access to Balboa Reservoir project

Hi Wade and Jeanie,

Fyi from SFFD about the access points to the site with 500 units.

Thanks,
Liz

From: Andrawes, Kamal (FIR) <kamal.andrawes@sfgov.org>
Sent: Monday, August 10, 2020 1:52 PM
To: White, Elizabeth (CPC) <elizabeth.white@sfgov.org>; Hong, Seung Yen (CPC) <seungyen.hong@sfgov.org>; Russell, Lou (FIR) <lou.russell@sfgov.org>
Subject: RE: *urgent* A quick question related to fire access to Balboa Reservoir project

Hi Liz,

Per 2016 CFC :

D106.2 Projects having more than 200 dwelling units.
Multiple-family residential projects having more than 200 dwelling units shall be provided with two separate and approved fire apparatus access roads regardless of whether they are equipped with an approved automatic sprinkler system.

Thank you,
Kamal Andrawes, P.E.
Fire Protection Engineer
San Francisco Fire Department
kamal.andrawes@sfgov.org



From: White, Elizabeth (CPC) <elizabeth.white@sfgov.org>
Sent: Monday, August 10, 2020 1:48 PM
To: Andrawes, Kamal (FIR) <kamal.andrawes@sfgov.org>; Hong, Seung Yen (CPC) <seungyen.hong@sfgov.org>; Russell, Lou (FIR) <lou.russell@sfgov.org>
Subject: Re: *urgent* A quick question related to fire access to Balboa Reservoir project

Hi Kamal,

Thanks for the quick response. We want SFFD's point of view on the entire Balboa Reservoir site plan, so all buildings, but again, we were not provided any plans/concept of what this would look like. So for us, at a high-level, the question is whether SFFD be able to support a site plan with that contains 500 units and one vehicle access point. If there are caveats a yes or no answer, would you please let us know what they are?

Thank you,
Liz

From: Andrawes, Kamal (FIR) <kamal.andrawes@sfgov.org>
Sent: Monday, August 10, 2020 1:37 PM
To: White, Elizabeth (CPC) <elizabeth.white@sfgov.org>; Hong, Seung Yen (CPC) <seungyen.hong@sfgov.org>; Russell, Lou (FIR) <lou.russell@sfgov.org>
Subject: RE: *urgent* A quick question related to fire access to Balboa Reservoir project

Hi Liz,

Please show which Building is your building.

Individuals against the project are arguing that the "extension of Lee Avenue through to the north end of the Project site would not be necessary under a 500-unit, 100% publicly-owned alternative, as the current access road along the north end would provide sufficient vehicle access the much smaller number of vehicles."

These individuals arguing in favor of a 500-unit project with one vehicle access point off Frida Kahlo have provided no site plans. Recognizing that we do not have detailed plans to provide you for review and comment, planning wanted to get a preliminary read from Fire about a proposal like this in case the supervisors ask about this proposal at the hearing tomorrow. Given these bare bone details, would Fire be ok with having one vehicle access point into a 500-unit site? Or if not, why would Fire not support/accept this proposal?

Thank you,
Liz
415-595-0235

Elizabeth White, Senior Environmental Planner

Environmental Planning Division

San Francisco Planning Department

PLEASE NOTE MY NEW ADDRESS AND PHONE NUMBER AS OF AUGUST 17:

49 South Van Ness Avenue, Suite 1400, San Francisco, CA 94103

Direct: 628.652.7557 | www.sfplanning.org

[San Francisco Property Information Map](#)

IN ORDER FOR US TO MOVE, OUR OFFICE WILL BE CLOSED WITH NO ACCESS TO PHONES OR E-MAIL ON THURSDAY, AUGUST 13 and FRIDAY, AUGUST 14. WE APPRECIATE YOUR PATIENCE.

Due to COVID-19, San Francisco Planning is not providing any in-person services, but we are operating remotely. Our staff are [available by e-mail](#), and the Planning and Historic Preservation Commissions are convening remotely. The public is [encouraged to participate](#). Find more information on our services [here](#).

From: Andrawes, Kamal (FIR) <kamal.andrawes@sfgov.org>

Sent: Monday, August 10, 2020 12:32 PM

To: Hong, Seung Yen (CPC) <seungyen.hong@sfgov.org>; Russell, Lou (FIR) <lou.russell@sfgov.org>; Law, Chad (FIR) <chad.law@sfgov.org>

Cc: Gauer, Gerald (FIR) <gerald.gauer@sfgov.org>; White, Elizabeth (CPC) <elizabeth.white@sfgov.org>; Cofflin, Ken (FIR) <ken.cofflin@sfgov.org>

Subject: RE: *urgent* A quick question related to fire access to Balboa Reservoir project

Hi Seung,

The picture you have provided has not information, Please provide a complete site plans showing the existing fire access, the street width and the streets frontage.

Thank you,

Kamal

From: Hong, Seung Yen (CPC) <seungyen.hong@sfgov.org>

Sent: Monday, August 10, 2020 11:53 AM

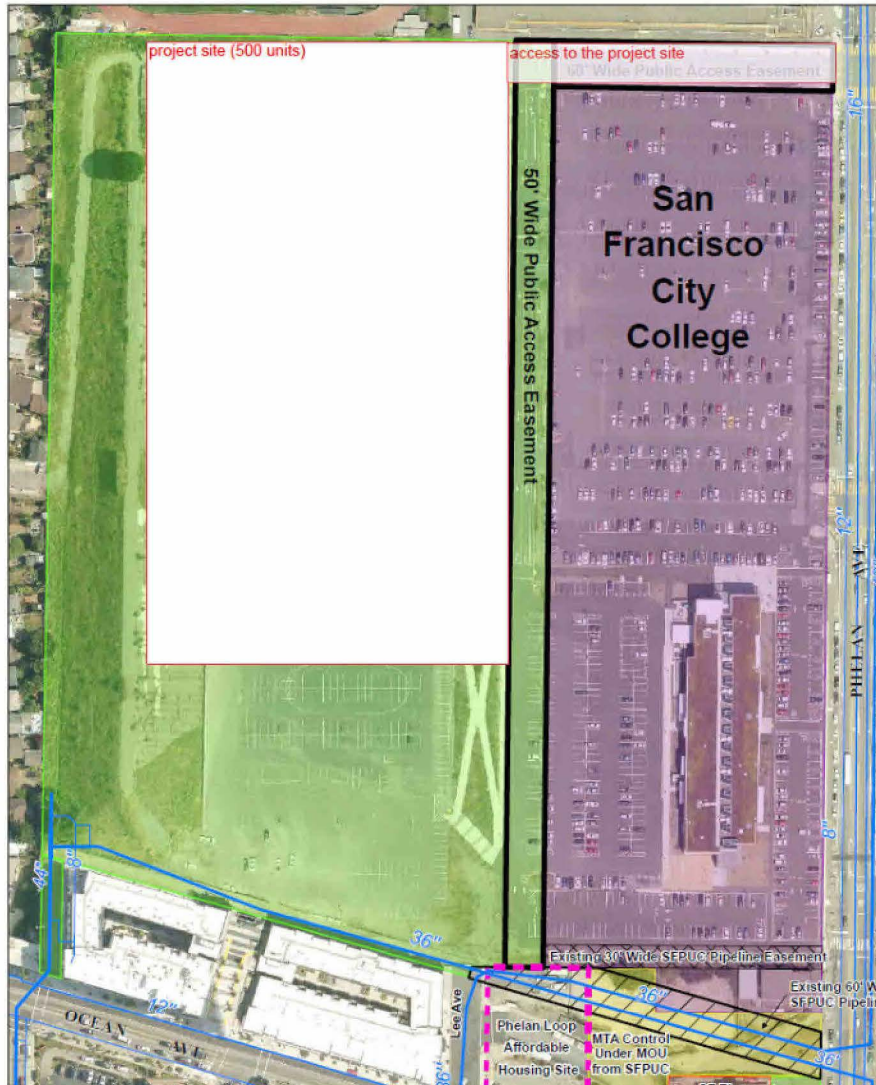
To: Russell, Lou (FIR) <lou.russell@sfgov.org>; Law, Chad (FIR) <chad.law@sfgov.org>

Cc: Gauer, Gerald (FIR) <gerald.gauer@sfgov.org>; White, Elizabeth (CPC) <elizabeth.white@sfgov.org>; Cofflin, Ken (FIR) <ken.cofflin@sfgov.org>; Andrawes, Kamal (FIR) <kamal.andrawes@sfgov.org>

Subject: RE: *urgent* A quick question related to fire access to Balboa Reservoir project

Hello, thanks for the followup. See below. Thank you.

If you could also explain why you would or would not accept this Balboa Reservoir site plan with vehicle one access point from Frida Kahlo, that would be helpful.



Seung-Yen

From: Russell, Lou (FIR) <lou.russell@sfgov.org>
Sent: Monday, August 10, 2020 11:45 AM
To: Law, Chad (FIR) <chad.law@sfgov.org>; Hong, Seung Yen (CPC) <seungyen.hong@sfgov.org>
Cc: Gauer, Gerald (FIR) <gerald.gauer@sfgov.org>; White, Elizabeth (CPC) <elizabeth.white@sfgov.org>; Cofflin, Ken (FIR) <ken.cofflin@sfgov.org>; Andrawes, Kamal (FIR) <kamal.andrawes@sfgov.org>
Subject: RE: *urgent* A quick question related to fire access to Balboa Reservoir project

Hello,

There is no image for me to look at anywhere in this email thread.

Please forward image.

Thank you,

Lourdes Russell, Chief

Assistant Fire Marshal
 698 Second Street, Room 109
 San Francisco, CA 94107
 Tel: (415) 558-3364

From: Law, Chad (FIR) <chad.law@sfgov.org>
Sent: Monday, August 10, 2020 8:03 AM
To: Hong, Seung Yen (CPC) <seungyen.hong@sfgov.org>
Cc: Gauer, Gerald (FIR) <gerald.gauer@sfgov.org>; White, Elizabeth (CPC) <elizabeth.white@sfgov.org>; Russell, Lou (FIR) <lou.russell@sfgov.org>; Cofflin, Ken (FIR) <ken.cofflin@sfgov.org>; Andrawes, Kamal (FIR) <kamal.andrawes@sfgov.org>
Subject: Re: *urgent* A quick question related to fire access to Balboa Reservoir project

Hi Seung,

Please contact Chief Lourdes Russel, who has replaced Chief Patt and is cc'd on this email along with SFFD personnel.

Thank you,

Chad

Sent from my iPhone

On Aug 7, 2020, at 11:28 AM, Hong, Seung Yen (CPC) <seungyen.hong@sfgov.org> wrote:

Hi Chad and Gerald,

I am emailing you because Captain Mike Pat who used to review the Balboa Reservoir project has retired, and we'd like to get a very initial reaction from you on a new concept that was suggested by Appellant (CEQA appeal case). If you could reply to my email with any response as soon as possible, it would be great. **Gerald**, it looks like Chad is out, could you please respond?

To simplify our question, **would Fire accept a site plan for 500 units with one single point of emergency access?** See image below for a very rough sketch. Liz, cc'd here, feel free to articulate our question further. Thank you!

<image001.png>

Seung-Yen Hong, LEED Green Associate
Urban Designer/Planner, City Design Group

San Francisco Planning
PLEASE NOTE MY NEW ADDRESS AND PHONE NUMBER AS OF AUGUST 17:
49 South Van Ness Avenue, Suite 1400, San Francisco, CA 94103
Direct: 628-652-7459 | www.sfplanning.org
[San Francisco Property Information Map](#)

IN ORDER FOR US TO MOVE, OUR OFFICE WILL BE CLOSED WITH NO ACCESS TO PHONES OR E-MAIL ON THURSDAY, AUGUST 13 and FRIDAY, AUGUST 14. WE APPRECIATE YOUR PATIENCE.

Due to COVID-19, San Francisco Planning is not providing any in-person services, but we are operating remotely. Our staff are [available by e-mail](#), and the Planning and Historic Preservation Commissions are convening remotely. The public is [encouraged to participate](#). Find more information on our services [here](#).